



TE PAEPAE O AOTEA

Kia eke atu ki Taupaenui o te tangata

Newsletter – 25 November 2022

Kia ora e te Whānau

We are thrilled to be sending home this week our junior and senior course booklets. Our team has designed a range of courses and modules to meet the needs of our community based on latest research and community feedback.

Students should login to the portal (link can be found on our website) to make their selections including alternate subjects. Students will only be able to login if they have enrolled at Te Paepae o Aotea. Students should select their modules and courses this side of Christmas so that our school timetable can be developed. On 30 and 31 January each student, together with their whānau and the whānau teacher, will meet to set learning goals for the year and confirm course and module selection. Planning sheets for these meetings will be sent home next week so families can discuss over the summer break.

Junior students will select two integrated learning modules, one community contribution option, one flexi time option and one taha tinana option. Students can select up to 6 alternate options. These will be used if changes need to be made to their learning programme if there are insufficient numbers for courses or modules to run.

The focus last week for Year 9 and 10 students was the mini careers expo. This was an opportunity for students to talk to some of our industry and tertiary partners prior to their course and module selections. Students made the most of this opportunity. Hopefully it will inspire students to make good choices in their course selection.

Senior students need to select four modules each semester. There are two semesters in the year. Senior students will need to plan their learning programme carefully as some modules are half year and some are full year. Students should also consider literacy and numeracy requirements. Students should also be aware of which modules are eligible for endorsement and students wanting to gain University Entrance should also ensure that they are selecting modules that will allow them to gain at least 14 credits. The junior and senior course booklets have contact emails for key staff who can give further information if needed.

Later in the newsletter are the uniform requirements for 2023. It is very important that students enrol and do a uniform fitting before 2 December. This is the last date we can send the uniform order through to ensure that it is going to be here in time. Thank you to everyone who has already taken the time to do this. We now have approximately 700 enrolments - so well over halfway there. If your child did not receive a prospectus, there is a copy on our website <https://www.tepaepaeootea.school.nz/> or you can collect a copy from either our office at 59 Victoria Street or your current school office. The sooner students enrol, the better, so we can plan for the start

of the new school year. Students currently at intermediate and high school NEED to complete an enrolment form for Te Paepae o Aotea.

On Friday, we continue to celebrate students who have been displaying our school values of **Aotea, Taupaenui and Paepae**. Each week we seem to increase the number of students who have been spotted by staff displaying these values. We look forward to many more students being acknowledged over the next few weeks as our Friday transition visits continue.

Our Feeder School transition visits are well underway. These conclude on the 1 December. Staff have enjoyed meeting the Year 6 and 8 students and building relationships with them. Students have been encouraged to ask as many questions as possible, so they feel confident at the start of 2023. The focus of these visits continues to be ensuring that our students feel connected and confident when they start at Te Paepae o Aotea.

If you have been past Bayly Park recently, you will have noticed that ALL the prefabs have arrived from the intermediate. Once these prefabs have been put on piles, the new Portacom ones will follow. We will continue to keep you updated on changes to property at the Camberwell Road site.

Friday 2 December is the PPTA (secondary teachers union) paid union meeting. Teaching staff need to be in New Plymouth for their meeting at 1.15pm. This means we will need to **close school at 12pm**. Hāwera High School and Hāwera Intermediate key staff will be available to supervise any bus students who cannot be collected at 12pm.

Every Friday at 9.15am we have a full Junior School Assembly for Year 7-10 students currently at Hāwera High School and Hāwera Intermediate. This assembly is in the hub at 9.15am. Whānau and community members are most welcome to join us.

Thank you to all those in our community who continue to support our school. We are very appreciative and look forward to continuing this journey with you.

Ngā mihi

Rachel Williams
Tumuaki

All students beginning 2023 at Te Paepae o Aotea must complete a new enrolment form including current Hāwera High School and Hāwera Intermediate School students.

[Click here for online enrolments](#)

Te Paepae o Aotea - Interim Uniform 2023

Te Paepae o Aotea Interim Uniform		
Polo Shirts	Navy blue polo shirt with school logo	NO COST 2x provided by the school
Hoodie	Navy blue hoodie with school logo	NO COST 1x provided by the school
Jackets	Navy Blue jacket with school logo	Available to purchase from the school at \$75
Shorts/Skirts etc	Plain dark navy blue or black school shorts, skort, culottes, skirt or long pants (no jeans)	Available from The Warehouse Hāwera and Postie Plus Hāwera
Footware	Plain all black school shoes/sandals	Own choice
PE Gear	There is no specific uniform for PE. Students change into comfortable activewear.	Own choice from home
Sports Uniforms	Sports uniforms will be provided by the School	Provided by the school



Pre-owned Hāwera High School uniform navy blue shorts, skirts, trousers and Hāwera Intermediate School uniform navy blue shorts can be worn.

The Ministry of Education EDI Fund will subsidise two Te Paepae o Aotea polo shirts and one Te Paepae o Aotea hoodie for each student. These will be issued at the start of 2023 at student Individual Learning Programme meetings with whānau. Additional polo shirts and hoodies are available for purchase. **Uniform order forms are attached to the Enrolment form.**

Uniform items not provided by the school can be purchased from The Warehouse Hāwera and Postie Plus Hāwera at very reasonable prices.

Uniform orders close 2 December 2022.

Beat the rush to secure your uniform for the 2023 school year.

We recommend a visit to Te Paepae o Aotea's office, 59 Victoria Street, Hāwera to try sample sizes.

Staffing Update

Senior Leadership Team

Rachel Williams	Tumuaki
Pauline Hurley	Leader of Learning – Senior Curriculum
Mahaki Akauola	Leader of Learning – Senior Pastoral
Kylie Surgenor	Leader of Learning – Junior Curriculum
Susan Hopkins	Leader of Learning – Junior Pastoral

Middle Leaders

Desmond Bain	ESOL Leader
Kelly Bunker	Maths Leader
Riejanne Campbell	Whare Pastoral Leader – Senior and Transition Leader
Shaun Campbell	Itinerant Music Leader
Jason Cressingham	Whare Curriculum Leader
Emily Davidson	Arts Senior Learning Designer
Kai Elgar	Social Sciences Senior Learning Designer and Careers Leader
Taylah Gilbert	Hauora Leader
Kepa Grindlay	Whare Pastoral Leader - Junior
Anaru Haerewa	Languages Senior Learning Designer
Christine Hargreaves	Whare Pastoral Leader – Senior
Sam Harris	Whare Curriculum Leader
Julie Hill	Whare Curriculum Leader
Virendra Kumar	Mathematics and Statistics Senior Learning Designer
Dawn Mendes	Whare Pastoral Leader – Junior
Kathryn Moss	ORS Leader
Sandrine Murphy	Whare Pastoral Leader – Junior
Arapeta Nikora	Te Reo Māori Leader
Jess Petersen	Technology Senior Learning Designer
Elizabeth Plodek	Science Senior Learning Designer
Chris Robinson	Whare Pastoral Leader - Senior
Kathryn Scown	SCT and Literacy Leader
Chelsea Snow	Whare Pastoral Leader - Junior
Erica Stephens	Whare Curriculum Leader and Literacy Leader
Kelly Stevens	Health and PE Senior Learning Designer
Elizabeth Stewart	ENCO
Faye Walker	Whare Pastoral Leader – Senior

Classroom Teachers

Kevin Barnard
Geron Pierre Bayatan
Mikayla Cadman
Vikash Chand
Laurence Earl
Rose Fischer
Bianca Glockler
Janine Horo
Louise Hurley

Corben Mortensen
Arielle Perrett
Dylan Perrett
John Roy
Catherine Saysell
Maddison Trousselot
Khushman Vaid
Brendon White
Georgia Whitehead

Guidance Counsellor

Benita Monteiro Eld
Megan Wereta

Learning Support Coordinator

Daphne Bhana

Support Staff

Jim Brown	Business Manager
Caroline Colville	Science Technician
Deidre Coogan	Gateway/STAR Coordinator
Megan Crawshaw	Student Data Administrator
Erica Evans	Student Support Worker
Melissa Garrett	Receptionist
Trevor Hardy	Property Manager
Nadine Hunt	Soft Materials Technician
Sue Johnston	Careers Assistant
Claire Kalin	Creative Design Administrator
Kristin Katu	Resource Centre Manager
Vicki Roberts	Sports Coordinator
Michelle Shaw	Arts Coordinator
Ruth Simons	Executive Assistant

Alternative Education Tutor

Ruby Kahui

Learning Assistants

Kathryn Abraham
Karen Andrews
Sine Boothby
Nicole Harrison
Alecia Kemeys
Annette Lockley
Julie Nicholas

Aroha Noble
Cathy Ogden
Eugene O'Sullivan
Michelle Shaw
Nilmini Thennakoon
Victoria Tissingh
Sharon Walton

Bus Routes

The link below shows the current bus routes. At the end of this term the revised South Taranaki bus routes will be available on this same link. The current Hāwera Intermediate stop has been removed from the bus route.

<https://www.education.govt.nz/school/property-and-transport/transport/school-bus-route-maps/>

School Documents

SchoolDocs provides a comprehensive core set of policies and procedures applicable to all New Zealand primary, intermediate, secondary and area/composite schools tailored for each school.

SchoolDocs update, modify and create policies in response to changes in legislation or Ministry guidelines, significant events, reviews/requests from schools and regular reviewing by the SchoolDocs team.



Te Paepae o Aotea school policies and procedures can now be viewed on our website or by using this link <https://tepaepaeoatea.schooldocs.co.nz>. As a member of the Te Paepae o Aotea community, you can view and review policies and procedures using the login details below.

SchoolDocs login details

Username: tepaepaeoatea

Password: excellence

Policies under review in Term 4, 2022 are Health, Safety and Welfare Policy (Main policy) and Safety On and Off School Grounds (section).

School Charter

Our school charter is now available on our website. Our senior leadership team will use this document to write our 2023 Annual Plan. Please familiarise yourself with this document.

Our charter includes three main sections:

- Introductory section - this section includes our story, narrative, values, guiding principles and our graduate profile.
- Strategic section - this describes our broad aims over the next 3-5 years.
- Annual section - this section is currently being developed by the senior leadership team and will have specific targets and actions for 2023.

TE PAEPAE O AOTEA

Kia eke atu ki Taupaenui o te tangata

The following values are the way we do things at Te Paepae o Aotea

AOTEA



Our value of Aotea represents a caring environment for all students, staff, whānau and community, to explore identity.

We create safe and caring learning environments.

We value and celebrate individual mana.

We develop authentic relationships.

TAUPAENUI



Our value of Taupaenui supports the attainment of human potential, the pursuit of knowledge and striving for excellence.

We uphold a learning culture that is inclusive and diverse.

We strive for personal excellence.

We have a positive attitude and a growth mindset.

PAEPAE



Our Value of Paepae supports the courage, adventure, strength, persistence and the pursuit of knowledge in the learning environment.

We are courageous and visionary.

We challenge with confidence, where appropriate.

We support each other to overcome obstacles and build resilience.

On Fridays this term we have been talking with Year 7 – 10 students about what our values look and sound like across our school.

Included on this page are the key messages of what our values look like in our formal school assembly setting.

Students were also reminded that when we are talking about “we” in our school values, this refers to everyone in our school environment (staff, students, whānau and wider community).

Last week’s students to receive awards were:

Aotea

Kayla Hagley, Anthea Sharrock,
Noah Cooper, Aliizae Henry,
Charlotte Denton, Lucas Colban,
Baxter Hunt, Carlitos Morellon Anderson,
Izabella Suter, Tymera Fata

Taupaeuui

Kayla Hori, Simulata Aholelei, Indyka-Azaria Hill, Leonardeous Snooks,
Mataya Moeke Mahuru,
Noah Lake, Nevaeh Ratahi,
Zevaya Prestidge, Paige Chatterton,
Aaliyah Smith, Emily Cleaver,
Hokowhitu Ngaheu, Kobe Wiringi,
Rhubyn Martin-Todd, Theo Neyens,
Cassidy Ratahi- Smith, Felix Butler,
Jaida Rei, Maddison Officer, Olivia Smith,
Sarni Ylitalo-van der Merwe, Javonte Veale,
Sofia Va'aelua, Peysha Hawira,
Lakein Woods, Nirvana Page-Oliver,
Eden Smythe, George Le Quesne,
Lauren Kalin, Rory McLeod

Paepae

Emma Apera, Kayla Lord-Poingdestre,
Payton, Melakaih Tweeddale,
Acacia Cook, Savarna Te Awhe-Tito,
Olivia Mills, Seth Lewis,
Ariana Graham, Charlotte Brosnahan,
Taerere Hepi -Puke, Bonnie Smyth,
Deanna Ruffle, Kasilk Phillips,
Ashton Hunt

Aotea

In assembly we create our safe environment by:

- Actively listening without talking to others.
- Clapping to celebrate the success of others.
- Supporting our speakers.
- Respecting the environment by walking on the rows, leaving the seats for sitting.
- Once we are seated, we all stay for the duration of assembly to avoid any distractions.
- Phones are not to be used in assemblies.
- Showing respect when we stand for the karakia in silence.
- Inviting our families and community to share our celebrations.

Taupaeuui

In assembly we strive for excellence by:

- ensuring that we are dressed in our very best school uniform, including the removal of hats and hoods.
- Celebrating personal excellence and success.
- Developing leadership skills.

Paepae

In assembly we show courage, adventure, strength and persistence by:

- Coming up to receive our awards, certificates with courage and confidence.
- By performing, presenting to the school with confidence to showcase your skills and talents.

Friday Focus

Year 7-9 Students

	Week 6	Week 7 Celebration	Week 8 Year 7 & 8 only
8.45 - 9:15	Whānau Hui	Whānau Hui	Individual plan to be decided for year 7 & 8 students.
9:15 - 9.45	Assembly	Tabloid Sports 12 rotations 2 x classes together	
9.45 - 10.45	Whānau Lesson		
10.45 - 11	Kai		
11 - 11.30	Interval		
11.30 - 12.45	Intergrated learning Module 6	Tabloid Sports continues until 12pm, students will be released at this time. Key staff from HIS and HHS will be available to supervise bus students.	All ex-HHS Staff attending final prize giving. All remaining Leaders with Year 7 & 8
12.45 - 1.15	Careers Expo	Paid Union Meeting (PUM)	
1.15 - 2:00	Lunch		
2:00 - 2.50	Community Contribution/ Careers Expo		
2.50-3.00	Whānau time		

Year 10 Students

	Week 6	Week 7 Celebration Day / Tabloid Sports
8.45 - 9.15	Whānau hui	Whānau hui
9.15 - 9.45	Assembly	Tabloid Sports 12 rotations 2 x classes together
9.45 - 10.45	Whānau Lesson	
10.45 - 11	Kai	BBQ Open Afternoon with Whānau
11 - 11.30	Interval	
11.30 - 12.45	ILM Subject selection	Assembly
1.15 - 2.00	Lunch	
2 - 2.50	Taha tinana	
2.50-3.00	Whānau time – Reflection	Whānau time – Reflection

Term Four Transition Programme


See the table below for your school's Transition Days.

Day One School name/narrative/Te Paepae o Aotea Values/whānaungatanga/tours.

Day Two Learning activities – a day in the life of a student at Te Paepae o Aotea.


TRANSITION PROGRAMME - TWO DAY SCHEDULE


Monday	Tuesday	Wednesday	Thursday	Friday
21 November Turuturu School	22 November	23 November St Joseph's School Auroa School	24 November Hāwera Primary School	25 November Hāwera Intermediate School
28 November St Joseph's School Auroa School	29 November <ul style="list-style-type: none"> • Ramanui School • Mokoia School • Kakaramea School 	30 November <ul style="list-style-type: none"> • Matapu School • Manaia Primary • Hāwera Christian School 	1 December Tawhiti School	2 December Hāwera Intermediate School



TE PAEPAE O AOTEA
Kia eke atu ki Taupaenui o te tangata

Senior Students BLAZERS





Please hold on to your current Hawera High School blazer.

An embroidered Te Paepae o Aotea emblem will be available to purchase.

This is to be placed over the current Hawera High School emblem.

Emblems will be available in the next few weeks -
Keep a look out on our Facebook page.

Individual Learning Programmes – Planning Meetings 2023

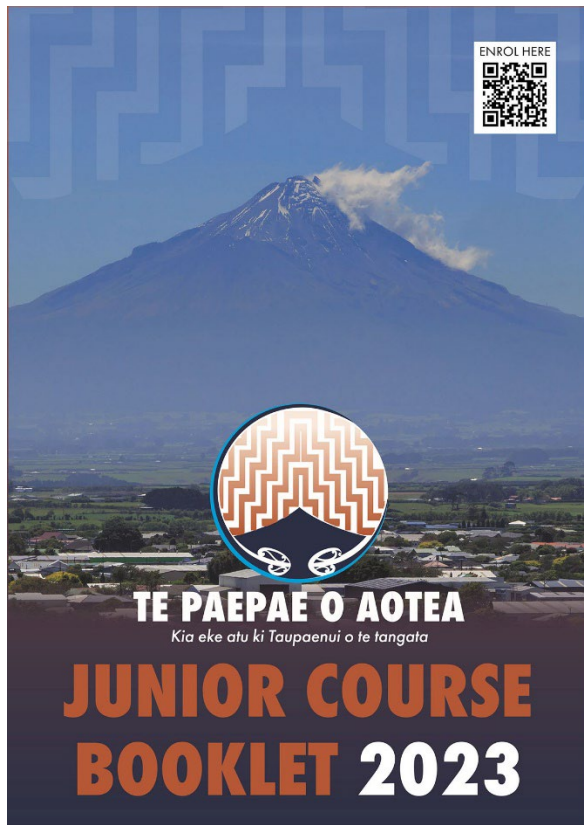
All students at Te Paepae o Aotea will meet with their whānau teacher on either 30 or 31 January 2023 to plan their Individual Learning Programmes and collect their provided uniform (2 x polos, 1 x hoodie). All enrolled students will be sent an Individual Learning Programme template prior to Christmas. This will give students and whānau an opportunity to discuss options and goals during the summer break.

Module Selection Information

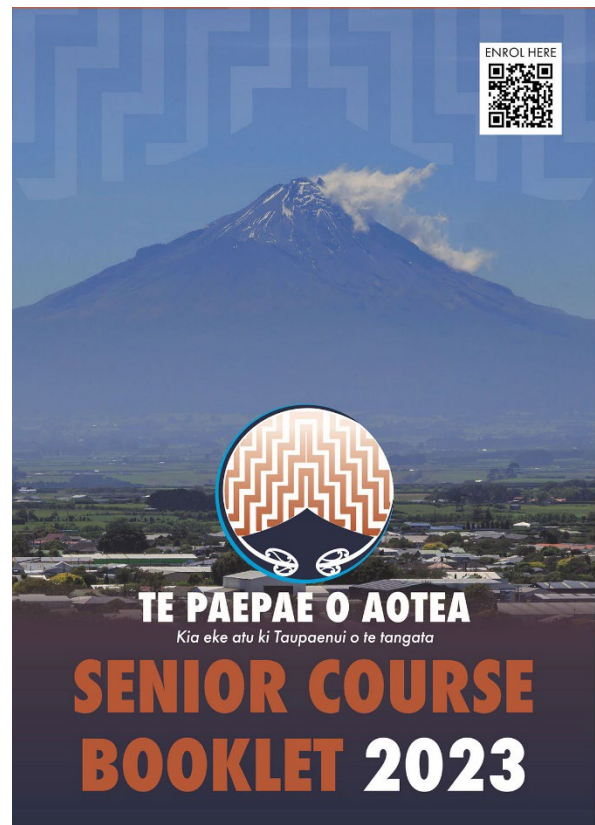
During Term 4, students will be exploring career and module selection during the Friday transition sessions. In week 6, following the student/parent NCEA Information evening, NCEA students will make their module selections for 2023.

All students will have the opportunity to select their modules online at the same time. All student learning programmes will be confirmed at whānau meetings at the beginning of the school year in 2023.

Junior & Senior Course Booklets 2023



[Junior Course Booklet](#)



[Senior Course Booklet](#)

Check out our Website

We encourage you to explore our website. Key information about our school name, logo, story and history can be found there. Remember, we also have a video explaining the significance of being gifted our name on our school website, www.tepaepaeootea.school.nz

Sponsorship Opportunity – Sports Uniforms

We are in the process of seeking quotes and designs from sports uniform companies. This is an opportunity for community members or businesses to come on board and sponsor one of our teams for 2023 and beyond. If you are interested and would like to know more, please **contact us on 06 223 2000**.

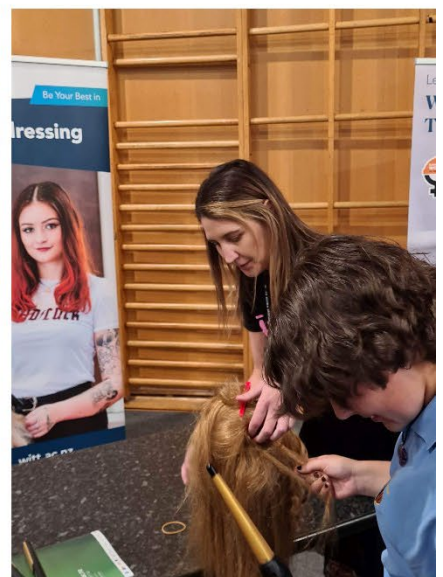


Community Timeline

Enrolments and Prospectus	Available now
Uniform sizing available in Office	Available now
Prefabs moved to Bayly Park	Ground work happening - moving of prefabs will be early Term 4
Transition visits for Year 7 -10	Every Friday, Term 4
Year 6 and 8 feeder school visits	Week 4, Term 4 onwards
Open afternoons/evenings	Week 4, Term 4 onwards
Uniform orders close	2 December 2022
Classroom Teachers and Support Staff Commence	Start of 2023
Individual Learning Programme Meetings	30 / 31 January 2023
Opening of school for 2023	1 February 2023

Social Media – Follow Us – Te Paepae o Aotea





Photos of activities with students taken during Te Paepae o Aotea Week 5 transition programme.

